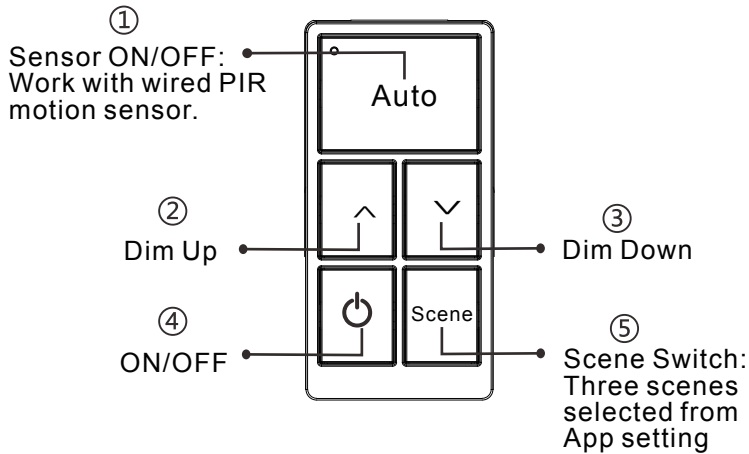


INSTRUCTIONS

1. Install 2pcs CR2032 battery by opening the back cover .
2. Press button ① and ② together over 2 seconds to enter pairing mode or achieve reset function. This switch can be scanned in next 30 seconds.
3. In BlueMesh App "Switch" page, click to add the switch.
4. Select the light/light group to be controlled by this switch.
5. Select 3 scenes to be controlled by this switch.

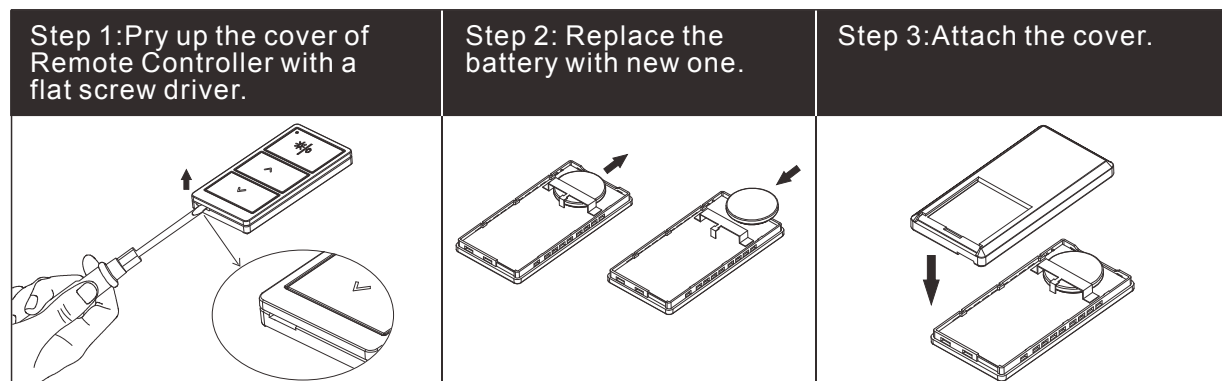


TIPS: This Bluetooth device is compatible with BlueMesh lighting control system only.

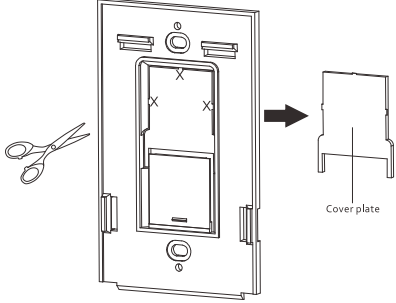
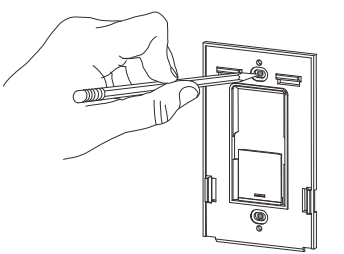
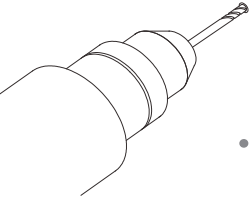
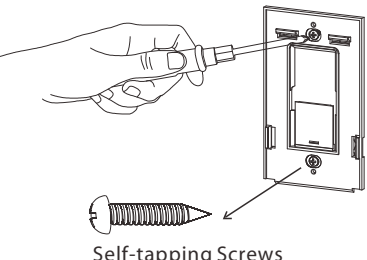
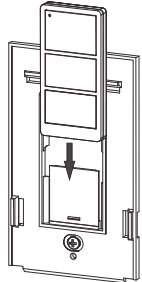
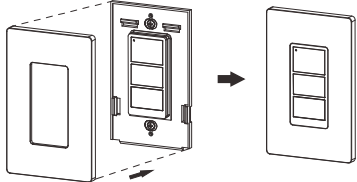
IMPORTANT

Battery model# CR2032. The battery can be used for 5 years based on the usage of twice a day.

Battery Installation



Wall Surface Installation

<p>Step 1: Remove the cover plate carefully with scissors.</p>	<p>Step 2: Mark a position you want to install.</p>	<p>Step 3: Dill two holes with power drill.</p>
 <p>Cover plate</p>		
<p>Step 4: Attach the Bracket with supplied self-tapping screws.</p>	<p>Step 5: Slide Remote Controller into the bracket.</p>	<p>Step 6: Attach the wall plate.</p>
 <p>Self-tapping Screws</p>		

WARRANTY

Our company warrants this product to be free of defects in materials and workmanship for a period of five(5) years. There are no obligations or liabilities on the part of our company for consequential damages arising out of, or in connection with, the use or performance of this product or other indirect damages with respect to loss of property, revenue or profit, or cost of removal, installation or reinstallation.